

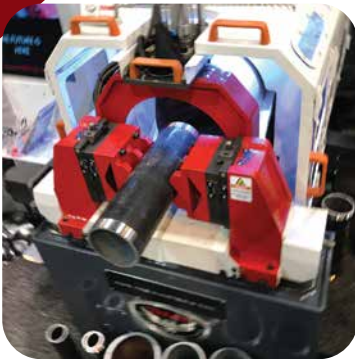


THE WORLD'S MOST VERSATILE
PIPE PROCESSING MACHINE

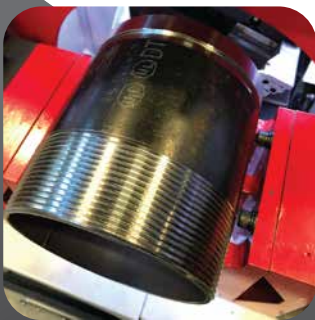
Optimum Production Efficiency
Wide Range 1" to 8" Capacity
Precise Pipe & Bolt Threading
FANUC CNC
High Speed Cut Groove, Beveling,
Turning & Tapering
Custom Profiles



PIPE SPOOL MASTER TGB 8 CNC



Pipe Threading in Seconds



PIPE SPOOL MASTER TGB 8 CNC	DETAILS
Machine Capacity OD	1" - 8"
Facing Head Diameter	10"
Spindle RPMs Max	100-900 RPM
Main Spindle Drive	5.5 HP
X Axis Stroke	1.57"
Z Axis Stroke	3.75"
Weight	3,850 lbs
Center Height	34.64"
Machine Dimensions (LxWxH)	61" x 40" x 55"
Complex Bevels (U, J & C - Any)	Yes-Fanuc CNC Series Oi-TF
Threading - Cut Groove	Yes- Fanuc CNC Series Oi-TF
Follower / Tracer Attachment (Optional)	If pipe is out of spec - round or oval, attachment will trace pipe to meet customer specifications.